

Join the **eqo.s** revolution



icl-growingsolutions.com

ICL



ICL introduces the latest sustainable innovation for controlled release fertilizers: **eqo.s** technology. A revolutionary, patented coating technology that is designed to deliver superior turfgrass performance with improved nutrient release patterns and the highest nutrient use efficiency, offering a faster breakdown of its fully biodegradable coating, **eqo.s** leaves no trace behind. Being compliant with future (EU) legislation, **eqo.s** is today's sustainable solution for turfgrass management.

Revolutionary faster biodegrading coating

With a revolutionary technology that is the first of its kind, **eqo.s** is a fully biodegradable coating that breaks down completely after all nutrients are released. The coating fully degrades into inert materials, leaving no trace behind.

Superior performance

Thorough testing in both lab and field conditions show **eqo.s** release technology has excellent results. The technology proves its reliable nutrient release over a 3-4 months period, resulting in consistent plant growth and high quality turfgrass.

Ready for the future

With the introduction of the **eqo.s** release technology, ICL ensures that customers can use our fertilizer products without worry, knowing that they conform to the highest level of regulations.



Spread
the revolution

The coating technology **that shapes the future**

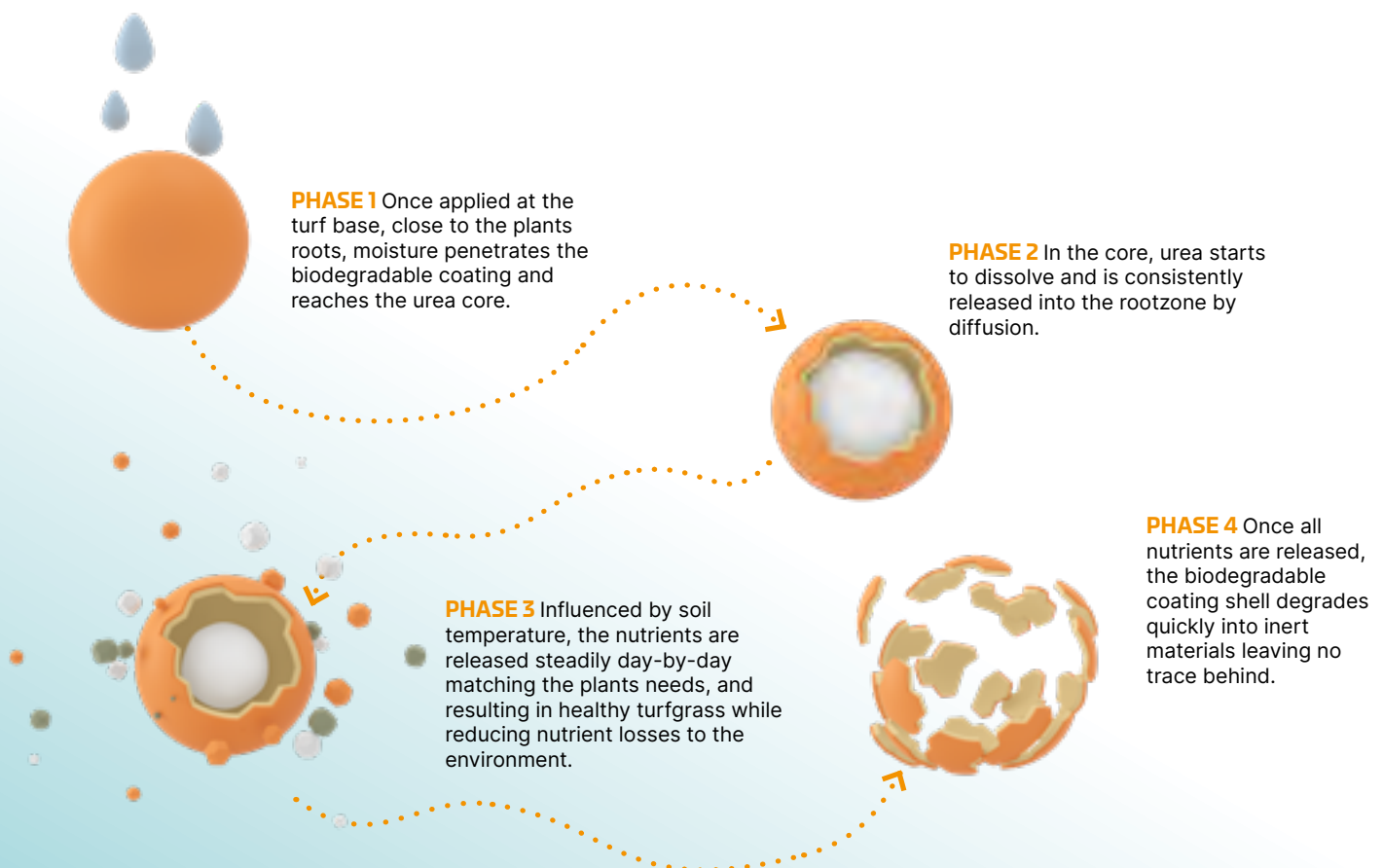
The use of CRFs (controlled release fertiliser) has proven to significantly increase the nutrient use efficiency, making it a sustainable choice for the professional turf industry. Additional to these benefits, **eqo.s** technology provides a full biodegradable coating once all nutrients are released.

Choosing controlled release fertilizers with **eqo.s**

- ❖ Improved nutrient release that matches plant needs over a longer period of time
- ❖ Revolutionary biodegradable coating, leaving no trace behind
- ❖ Compliant with future (EU) fertilizer regulations
- ❖ Use less fertilizer: fewer applications required
- ❖ Less nutrient losses to the environment
- ❖ Consistent, reliable release for consistent growth
- ❖ Stronger, greener, more resilient turfgrass

The working principle of **eqo.s**

ICL specialises in the development of innovative coating technologies. The **eqo.s** release technology works the same as other CRF technologies, with the additional benefit of complete biodegradability in a known time frame.



A sustainable solution for turfgrass management

ICL is continuously looking for new sustainable solutions to help turf managers, greenkeepers and landscapers with their day-to-day challenges in the field. Whether it is a product improvement, a new technology, or a completely new product; researchers and experts join forces at ICL to create the highest quality products.

Environmental benefits of Controlled release fertiliser (CRF)

CRFs have environmental benefits in comparison to conventional fertilizers. The coating technology of **eqo.s** leads to a significant reduction in leaching and volatilisation of nutrient with major environmental benefits. On top of this, **eqo.s** ensures a faster breakdown of the fully biodegradable coating, further lowering the environmental footprint in turfgrass management.



In comparison to conventional fertilizers, CRFs with **eqo.s** technology provide:

- ✓ Reduction in leaching
- ✓ Reduction in ammonia volatilisation
- ✓ Higher nitrogen use efficiency

Sierrablen, ProTurf and Sierrablen Plus: soon available with **eqo.s**!



Keep your tees, outfields and sports pitches in top condition with ICL's premium quality controlled release fertilizers Sierrablen, ProTurf and Sierrablen Plus. These brands have a proven release performance that is consistent and reliable in all weather conditions. Your turf stays healthy and strong all year round with continuous nutrition in fewer applications.

Sierrablen, ProTurf and Sierrablen Plus are the first to incorporate the eqo.s technology. Our other brands will follow later.





ICL's ground breaking innovations start here

The production of the **eqo.s** technology has taken a significant amount of ICL's research and development. Thanks to years of effort from an extensive team of experts, including formulation chemists, chemical engineers, agronomists,

analysts, technical and marketing professionals, ICL can continue offering the very best quality fertilizers with the highest level of nutrient use efficiency, while being compliant with the strict requirements of future legislation.

We're proud to be upholding the highest standard of fertilizer quality and regulation that is required.

We are leading the way in the industry ensuring that our customers meet the required targets."

Dr Andy Owen, ICL International Technical Manager Turf & Landscape ICL

What to expect from CRFs with **eqo.s** technology

ICL's newest biodegradable coating, **eqo.s**, is set to be one of the most important technological innovations since the first CRFs were introduced to the market. The new technology works similarly to existing coating technologies, but with some key improvements.

Dr Andy Owen: "Customers of ICL's CRFs such as Sierrablen, ProTurf and Sierrablen Plus get a very consistent, improved nutrient release, high quality turfgrass, and they can be reassured that the coatings and components will biodegrade more quickly thanks to the new **eqo.s** coating."



Read the full **eqo.s** story with Dr Andy Owen, ICL International Technical Manager Turf & Landscape





Lab and field trials

CRF products with **eqo.s** technology show the same advantages in turf as current coating technologies, and have been thoroughly tested in lab and field conditions to prove their performance. Trials have shown there's no longer a need to compromise between biodegradability and high performance.

Read the interview with Susan Sijstermans, Senior Specialist Product Development

"Lab and field tests show that it's a really consistent, reliable product. We are able to offer a product that meets the high ICL standards in terms of quality, performance, reliability and safety for turfgrass, and at the same time is future-proof with the fast breakdown of its unique, fully biodegradable coating; I'm very proud to be part of this innovation."

Susan Sijstermans, Senior Specialist Product Development at ICL's R&D.



*One of the field trials including CRFs with **eqo.s** release technology.*

ICL Growing Solutions: our sustainability strategy

ICL is committed to creating responsible solutions to humanity's sustainability challenges in the global food, agriculture, and industrial products markets. With our global society facing unprecedented challenges to its sustainability, ICL has positioned itself at the forefront, responsibly advocating for the protection of our planet by creating innovative sustainable solutions in agriculture, food processes, as well as sustainable industrial

products. We adhere to the highest environmental standards and utilize the best available technologies in order to develop sustainable approaches.

ICL's global expertise

Providing you with outstanding products and solutions that will deliver perfect grass all around the world.



Spread the revolution with eqo.s[®]



The first CRF technology with a biodegradable coating is here.

ICL's latest sustainable innovation, eqo.s, is the first CRF technology with a biodegradable coating. It offers faster breakdown of the coating, making it ready for the future. You can spread the revolution too, without changing a thing to your Integrated Turf Management Program.

Find out more or sign up for updates on eqo.s.

bit.ly/eqos_Revolution



ICL Australia & New Zealand
Tel: 1800 789 338
Oversea: (+61) 2 8801 3300

icl-growingsolutions.com

